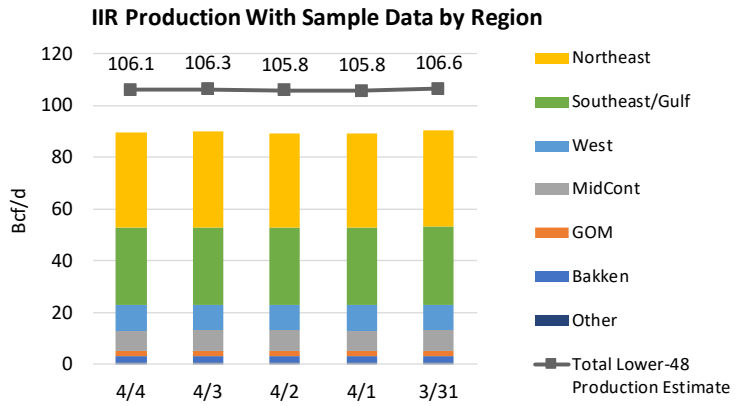


US Natural Gas Production

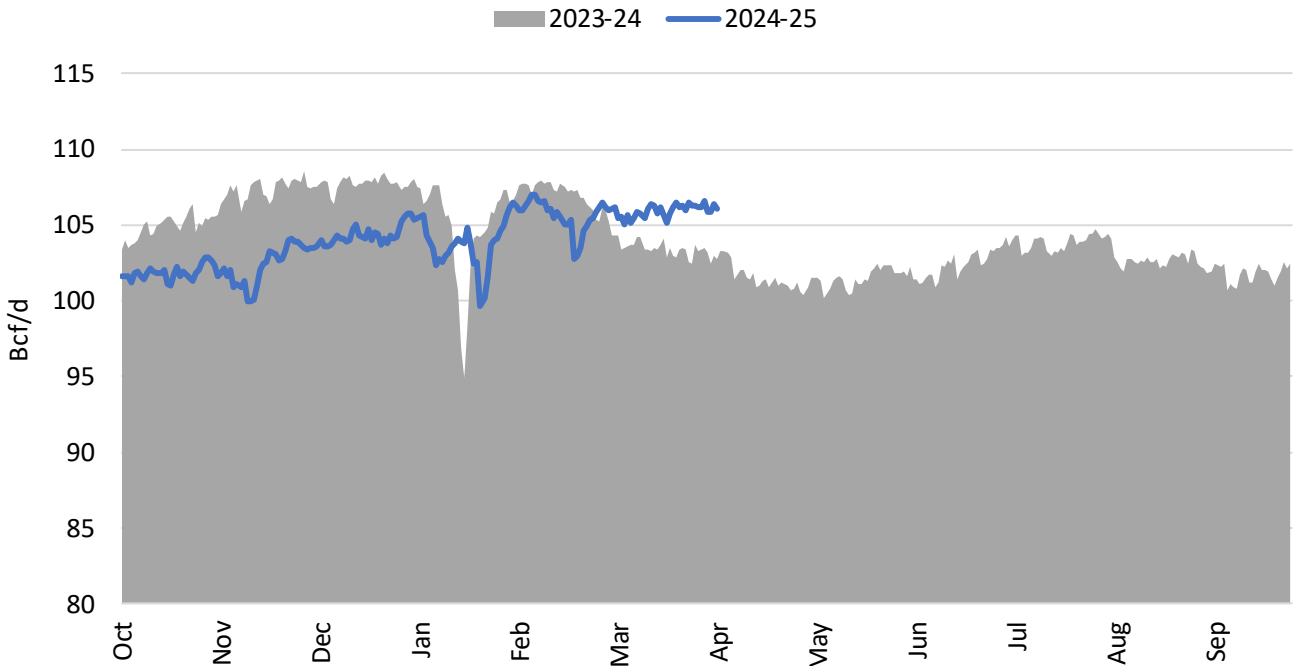
- Natural gas production reached 106.1 Bcf/d on April 4, a decrease of 0.2 Bcf/d compared to yesterday, but 0.3 Bcf/d higher than on April 1-2.
- U.S. exports to Mexico remain strong at 7.4 Bcf/d on April 4, marking the fourth consecutive day at this level. This represents an increase of 0.7 Bcf/d compared to both last month and the same time last year.



IIR Lower-48 Natural Gas Production Sample and Estimate (MMcf/d)

Region	State	4/4/2025	4/3/2025	4/2/2025	4/1/2025	3/31/2025	Last Month	Change	Last Year	Change
Bakken		2,572	2,528	2,544	2,520	2,545	2,637	-65	2,641	-69
GOM		1,809	1,876	1,870	1,846	1,799	1,821	-12	1,975	-166
MidCont	Arkansas	794	788	774	790	839	800	-5	912	-118
MidCont	Kansas	279	289	336	308	283	281	-2	287	-7
MidCont	Oklahoma	4,477	4,481	4,438	4,401	4,642	4,760	-282	4,043	434
MidCont	Wyoming	2,443	2,481	2,509	2,514	2,581	2,551	-108	2,400	43
MidCont Total		7,993	8,039	8,057	8,013	8,346	8,391	-398	7,642	352
Northeast	Ohio	5,221	5,056	5,188	5,024	5,246	4,915	306	4,842	380
Northeast	Pennsylvania	21,433	21,840	21,470	21,528	21,682	21,099	334	20,690	743
Northeast	Virginia	223	235	240	228	243	235	-13	242	-19
Northeast	West Virginia	9,882	9,878	9,797	9,882	9,899	9,461	422	8,541	1,342
Northeast Total		36,759	37,009	36,695	36,662	37,070	35,710	1,049	34,315	2,445
West	California	87	89	128	125	135	118	-31	152	-64
West	Colorado	4,768	4,748	4,675	4,706	4,688	4,810	-42	4,756	12
West	New Mexico	4,178	4,164	4,211	4,227	4,201	4,240	-62	3,735	442
West	Utah	769	768	757	771	789	757	12	720	49
West Total		9,802	9,769	9,771	9,828	9,813	9,924	-122	9,363	439
Southeast/Gulf	Alabama	165	205	185	172	146	214	-48	144	22
Southeast/Gulf	Louisiana	9,135	9,179	8,906	9,104	9,244	8,810	325	9,513	-377
Southeast/Gulf	Texas	20,859	20,860	20,807	20,702	20,805	20,948	-89	19,601	1,258
Southeast/Gulf Total		30,159	30,244	29,898	29,978	30,194	29,971	188	29,257	903
Other		565	545	545	530	553	459	106	455	110
IIR Production Sample		89,660	90,011	89,380	89,376	90,320	88,914	746	85,647	4,013
Total Lower-48 Production Estimate		106,061	106,348	105,832	105,829	106,600	105,452	610	102,783	3,279

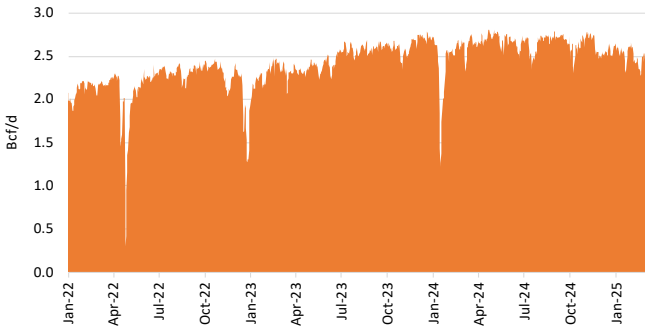
IIR Lower-48 Gas Production Estimate



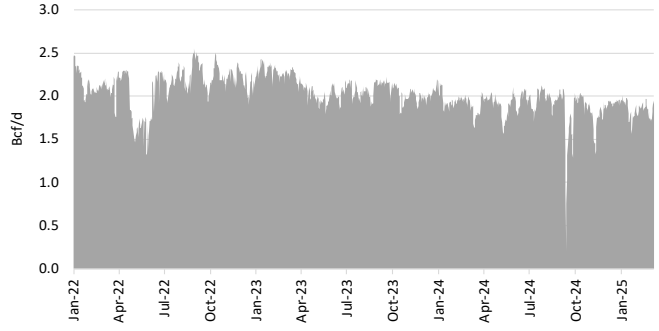
Gas Production by Major Regions

IIR Gas Production Sample. These regions don't need an estimate as the sample observes nearly 100% of the actual production.

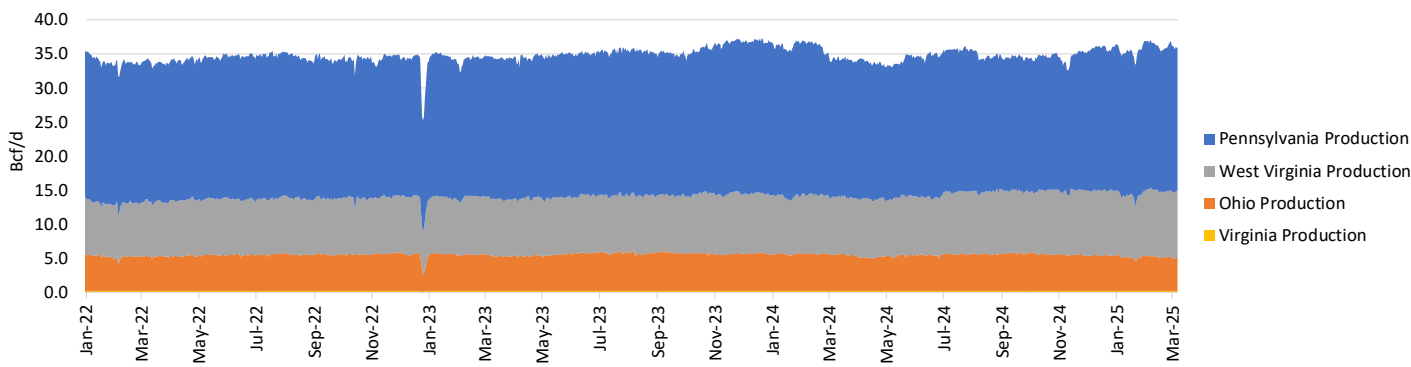
Bakken (ND) Production



Gulf of Mexico Production

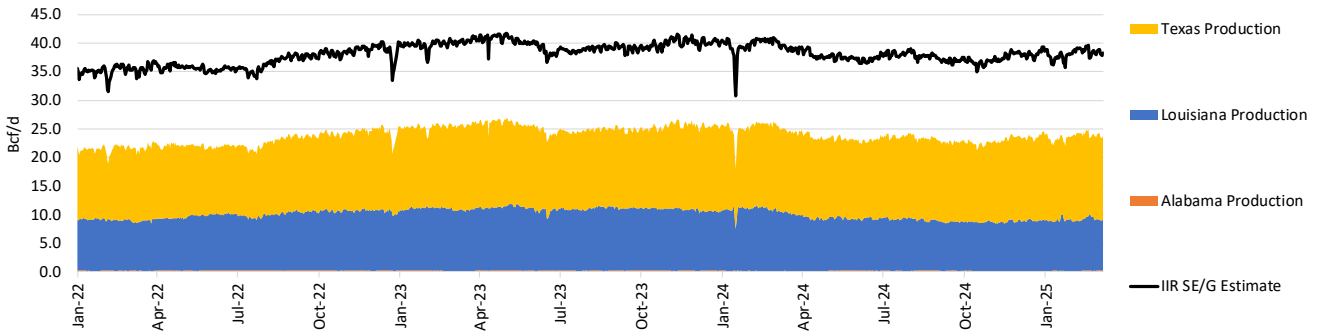


Northeast Production by State

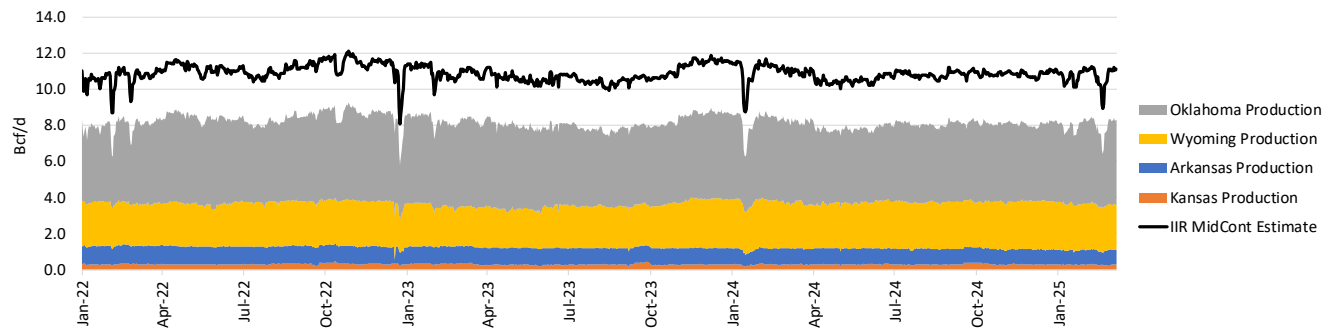


IIR Gas Production Sample and Estimates:

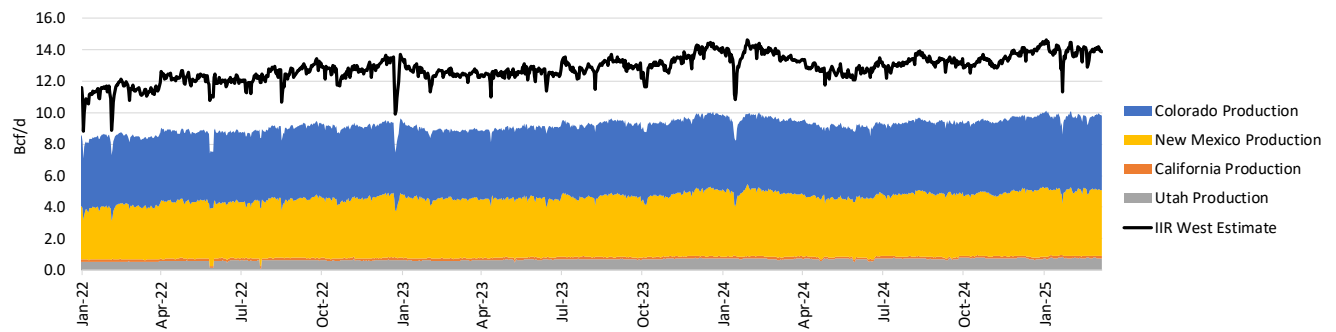
SE/Gulf Production by State



MidContinent Production by State



West Production by State



LNG Exports

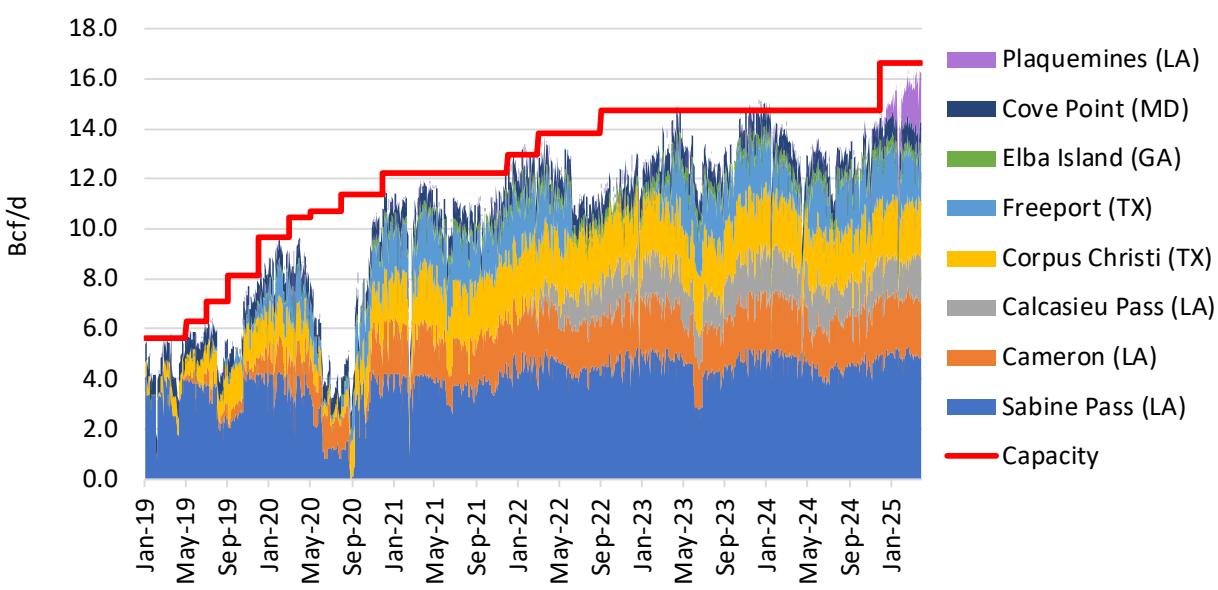
LNG Terminals Under Construction:

- Corpus Christi Stage III (TX). Train 1-7: 1H2026, 1.39 Bcf/d (Train 1-1Q2025)
- Golden Pass (TX). Train 1: 1H2026, Train 2: 2H2026, Train 3: 1H2027, 0.8 Bcf/d/train
- Plaquemines (LA). Train 19-36: 2026, 1.96 Bcf/d
- Port Arthur (TX). Train 1-2: 2027, 1.78 Bcf/d

US LNG Exports by Terminal (MMcf/d)

LNG Terminal	Capacity	Util. (%)	4/4/2025	4/3/2025	4/2/2025	4/1/2025	3/31/2025	Last Month	Change	Last Year	Change
Sabine Pass (LA)	4,560	100%	4,550	4,478	3,864	4,257	4,645	4,996	-446	4,988	-438
Cameron (LA)	2,130	101%	2,154	2,160	2,190	2,220	2,235	2,302	-148	2,292	-138
Calcasieu Pass (LA)	1,760	100%	1,753	1,838	1,822	1,856	1,812	1,385	368	1,473	281
Corpus Christi (TX)	2,400	93%	2,242	2,243	1,769	1,604	2,183	2,338	-96	2,282	-41
Freeport (TX)	2,370	89%	2,119	2,074	2,035	2,031	2,015	1,947	172	773	1,346
Elba Island (GA)	500	62%	309	300	300	320	325	305	4	385	-76
Cove Point (MD)	1,000	87%	865	865	865	865	864	864	1	872	-6
Plaquemines (LA)	1,890	113%	2,142	2,140	2,084	2,118	2,058	1,637	505	0	2,142
Total LNG Exports	16,610	97%	16,134	16,100	14,930	15,273	16,137	15,775	360	13,065	3,070

LNG Exports by Terminal



Freeport (TX)		
Pipeline	4/4	4/3
Gulf South	0.62	0.59
HPL	0.00	0.00
Tennessee	0.05	0.05
NGPL	0.02	0.02
Transco	0.00	0.00
Enterprise TX	0.77	0.81
FGT	0.00	0.00
BIG	0.34	0.36
TETCO	0.32	0.25
Total	2.11	2.07
Capacity	2.37	2.37
Util (%)	89%	87%

Sabine Pass (LA)		
Pipeline	4/4	4/3
Creole Trail	1.45	1.35
KM LA	1.18	1.20
NGPL	0.75	0.75
Transco	1.17	1.18
Total	4.55	4.48
Capacity	4.56	4.56
Util (%)	100%	98%

Cove Point (MD)		
	4/4	4/3
Total	0.87	0.87
Capacity	1.00	1.00
Util (%)	87%	87%

Elba Island (GA)		
	4/4	4/3
Sonat	0.31	0.30
Capacity	0.50	0.50
Util (%)	62%	60%

Corpus Christi (TX)		
Pipeline	4/4	4/3
Enterprise TX	0.30	0.30
NGPL	0.41	0.44
Tenn	0.40	0.37
Transco	0.11	0.16
KM Tejas	1.01	0.98
Total	2.24	2.24
Capacity	2.40	2.40
Util (%)	93%	93%

Cameron (LA)		
	4/4	4/3
Total	2.15	2.16
Capacity	2.13	2.13
Util (%)	101%	101%

Calcasieu Pass (LA)		
Pipeline	4/4	4/3
ANR	0.97	1.00
TETCO	0.71	0.67
TransCameron	0.08	0.17
Total	1.75	1.84
Capacity	1.76	1.76
Util (%)	100%	104%

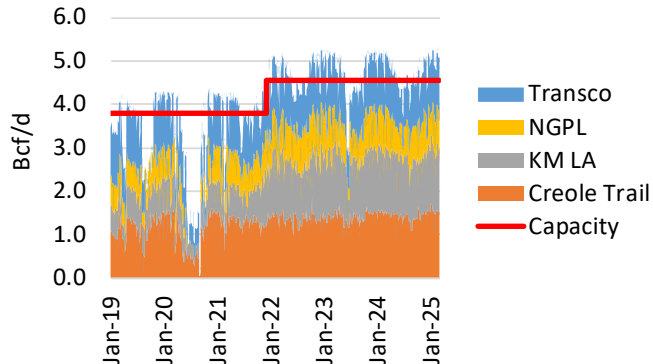
Plaquemines (LA)		
	4/4	4/3
Total	2.14	2.14
Capacity	1.89	1.89
Util (%)	113%	113%

LNG Exports by Terminal

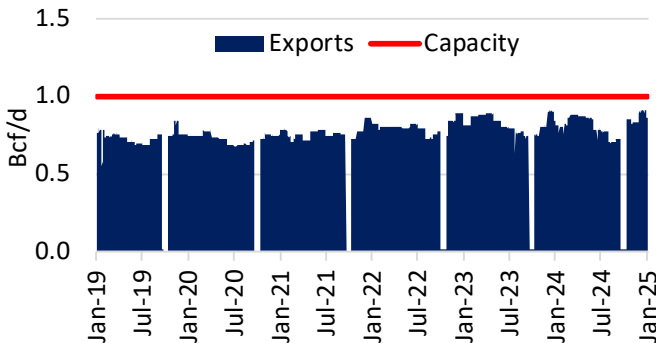
Methodology Notes:

- The capacities listed in the table below are based on EIA's DOE-authorized export quantity FTA countries.
- Some facilities are showing utilization above 100% due to seasonal capacities

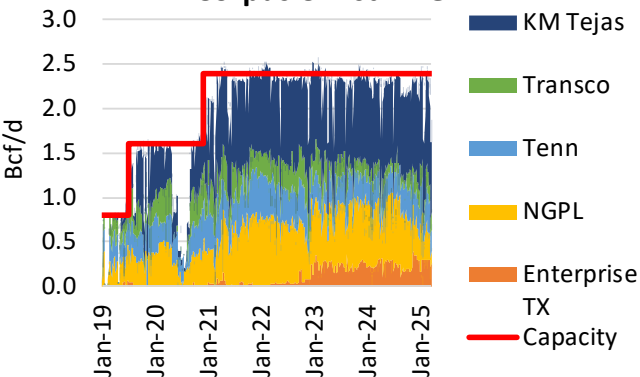
Sabine Pass LNG



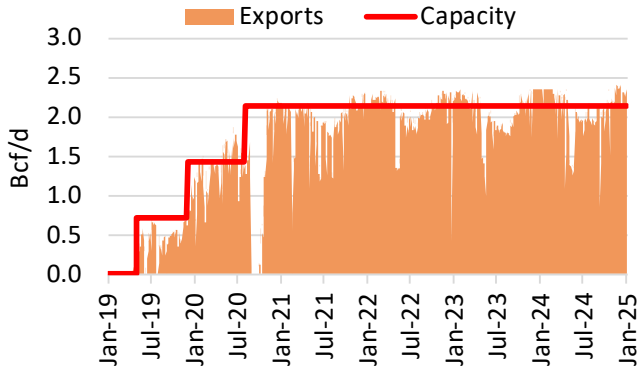
Cove Point LNG



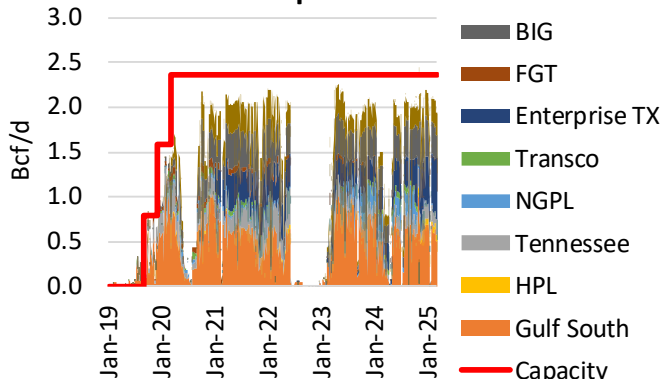
Corpus Christi LNG



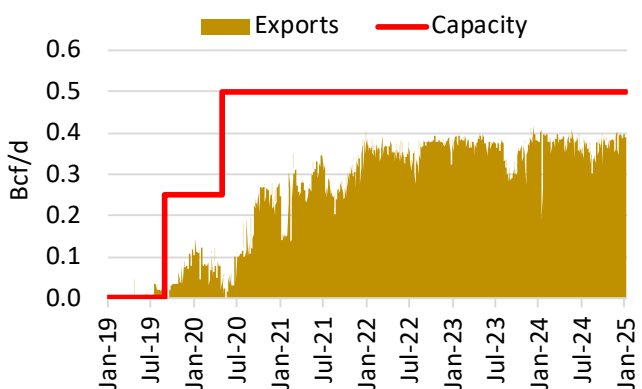
Cameron LNG



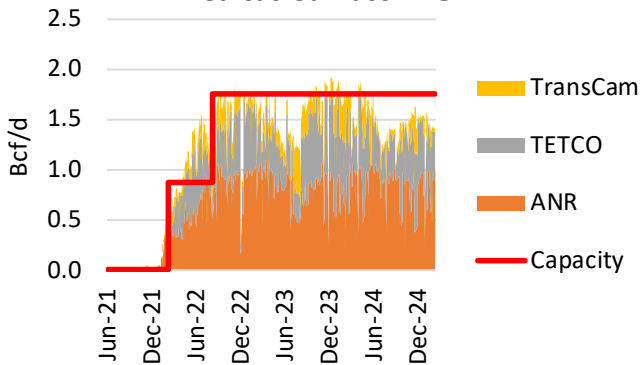
Freeport LNG



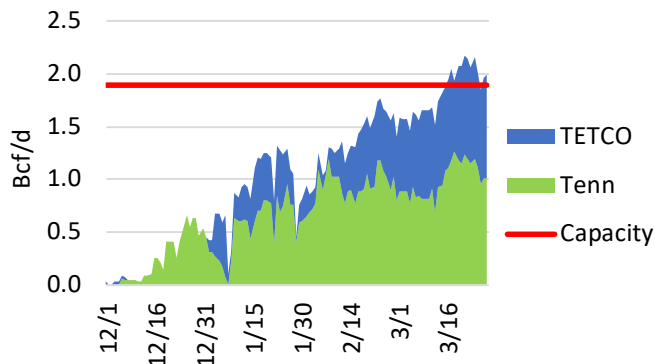
Elba Island LNG



Calcasieu Pass LNG

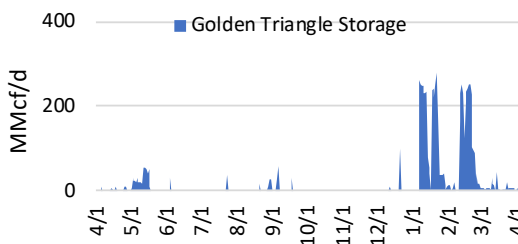


Plaquemines LNG



Under Construction: Pipeline Gas

Golden Pass LNG- Pipeline Receipts

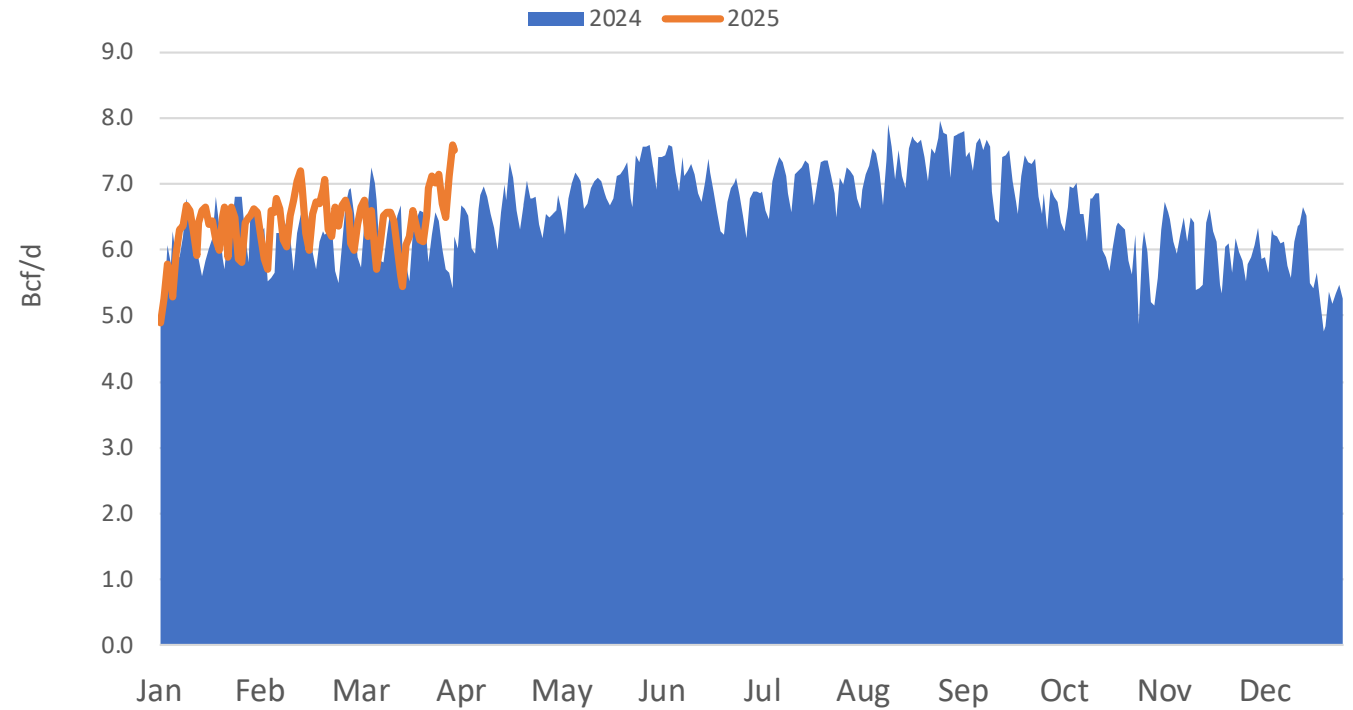


US Exports to Mexico

Mexican Exports by Point of Entry/Exit (MMcf/d)

Area	Border Point	4/4/2025	4/3/2025	4/2/2025	4/1/2025	3/31/2025	Last Month	Change	Last Year	Change
Arizona	El Paso AZ to MX Agua Prieta	115	115	117	119	111	109	6	96	19
Arizona	El Paso AZ to MX Cochise	1	1	1	1	1	1	0	1	0
Arizona	El Paso AZ to MX Douglas	74	74	74	84	79	64	10	73	1
Arizona	El Paso AZ to MX West - Nogales	1	0	0	0	1	1	0	0	1
Arizona	El Paso AZ to MX Willcox	29	30	32	33	27	24	6	40	-10
Arizona	North Baja MX to AZ Yuma Border	0	0	0	0	0	-11	11	-2	2
Arizona	Sierrita AZ to MX Sasabe	120	61	59	72	33	27	93	0	120
Arizona Total		341	282	283	310	253	214	126	208	133
California	North Baja Ogilby US to MX	305	284	312	320	294	371	-67	318	-14
California Total		305	284	312	320	294	371	-67	318	-14
South Texas	ET Houston Pipeline Arguelles US to MX	231	231	231	229	184	193	38	155	76
South Texas	Howard Midstream - Impulsora US to MX	363	363	363	363	363	363	0	424	-61
South Texas	KM Tejas Coral US to MX	351	354	354	353	359	358	-7	340	11
South Texas	KM Texas Mier Monterrey US to MX	72	72	72	72	73	76	-4	92	-20
South Texas	NET Mexico TX to MX Rio Grande	1,631	1,771	1,750	1,853	1,691	1,676	-45	1,589	42
South Texas	Roma KM Texas TX to MX	457	442	437	350	378	412	45	412	45
South Texas	Sur de Texas-Tuxpan TX to MX Brownsville	1,413	1,441	1,466	1,478	1,331	1,171	242	1,197	216
South Texas	Tennessee Gas TX to MX Hidalgo	123	128	123	151	109	119	4	57	66
South Texas	Tennessee Gas TX to MX Rio Bravo	248	241	240	242	246	148	100	121	126
South Texas	Texas Eastern MX to TX	0	0	0	0	0	0	0	0	0
South Texas	Texas Eastern TX to MX Reynosa	0	0	0	0	0	0	0	0	0
South Texas Total		4,888	5,043	5,035	5,091	4,734	4,516	372	4,387	501
West Texas	Comanche Trail TX to MX	706	706	706	636	729	521	185	784	-78
West Texas	El Paso TX to MX Cactus Hill	0	0	0	0	0	0	0	0	0
West Texas	El Paso TX to MX Samalayuca	173	200	193	177	89	117	56	109	64
West Texas	ET Trans-Pecos Presidio TX to MX	662	662	662	742	745	876	-214	612	50
West Texas	OkTex TX to MX Juarez	0	0	0	0	0	0	0	0	0
West Texas	ONEOK Westex Roadrunner US to MX	319	319	319	322	280	31	288	208	111
West Texas Total		1,860	1,887	1,880	1,878	1,843	1,545	315	1,713	147
IIR US Net Exports to Mexico		7,393	7,496	7,510	7,598	7,124	6,646	746	6,625	768

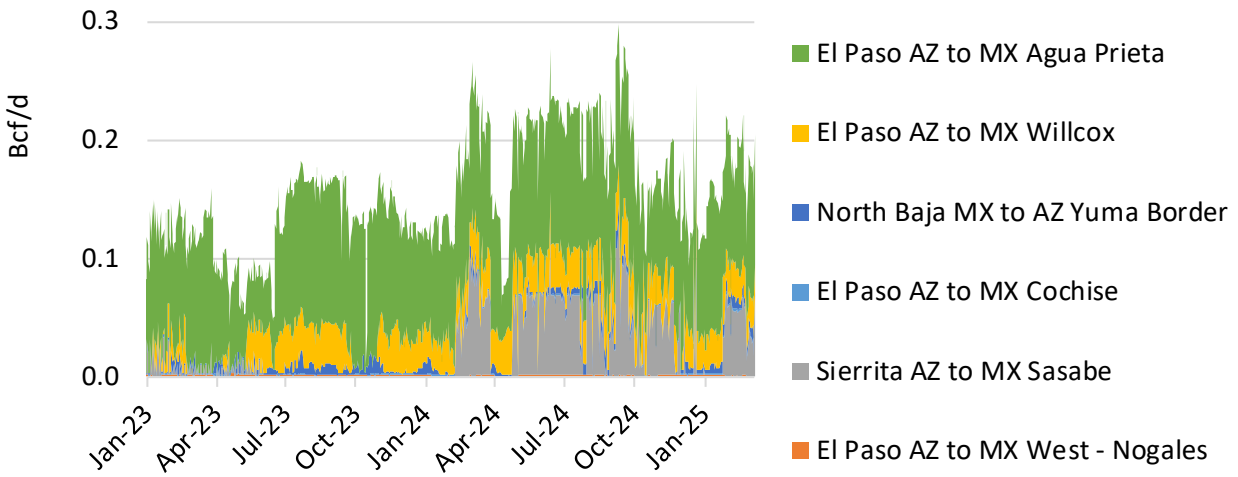
US Exports to Mexico



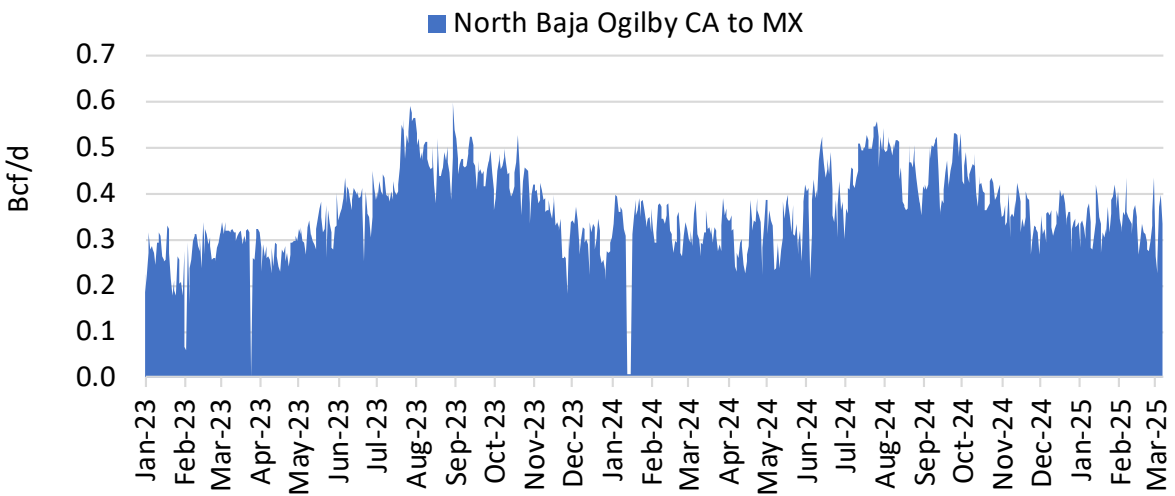
MEX Exports (Bcf/d)	Apr-24	May-24	Jun-24	Jul-24	Aug-24	Sep-24	Oct-24	Nov-24	Dec-24	Jan-25	Feb-25	Mar-25	Apr-25
Average	6.58	6.98	7.23	7.02	7.37	7.24	6.33	6.00	5.85	6.36	6.20	6.39	7.50
Peak	7.34	7.60	7.73	7.41	7.95	7.80	6.98	6.73	6.72	6.84	6.68	7.15	7.60

Mexican Exports by State and Border Point

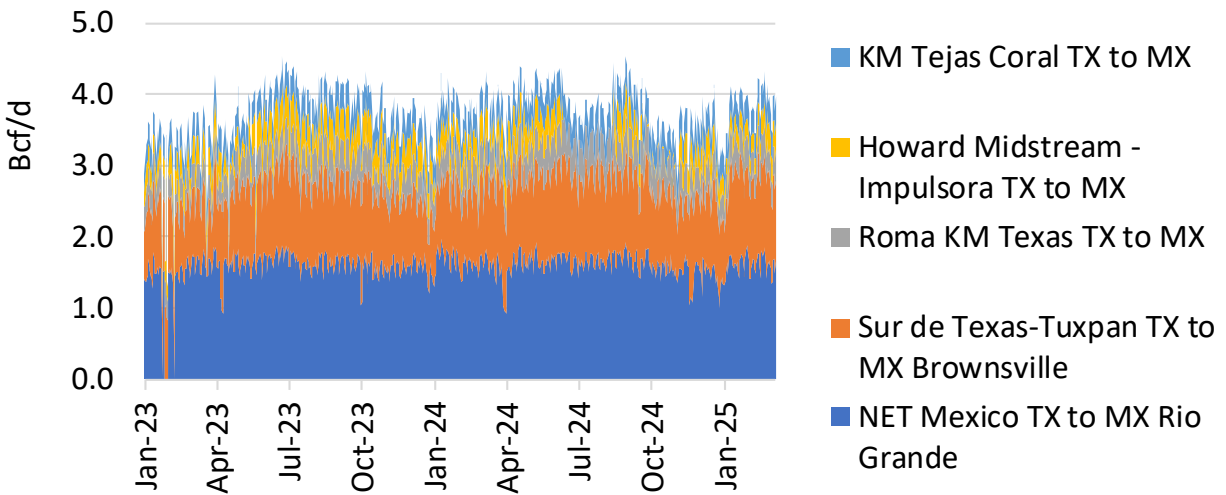
Arizona by Point of Border



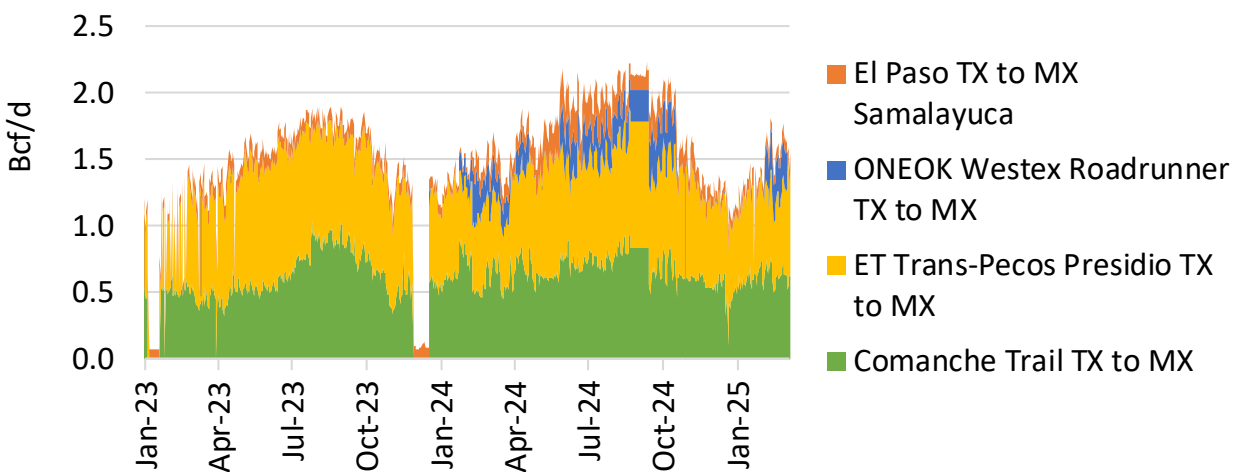
California - North Baja Ogilby



West Texas - Major Border Points



South Texas - Major Border Points

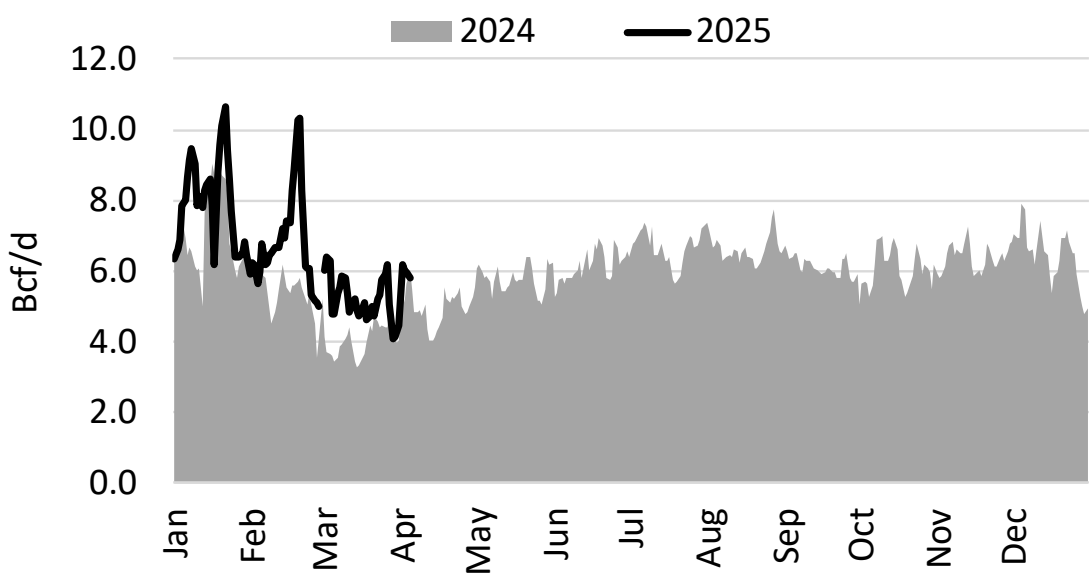


US Imports from Canada

Canada Imports and Exports by Point of Entry/Exit (MMcf/d)

Region	Type	Border	4/4/2025	4/3/2025	4/2/2025	4/1/2025	3/31/2025	Last Month	Change	Last Year	Change
Midwest	Exports	ANR Corunna GP MI to ON	0	0	0	0	82	82	-82	0	0
Midwest	Exports	Bluewater MI to ON	0	0	0	0	0	0	0	0	0
Midwest	Exports	DTE MichCon: Union St. Clair US to CAN	115	115	115	109	170	178	-63	0	115
Midwest	Exports	Great Lakes Gas St. Clair MI to ON CAN	960	1,007	1,115	852	1,302	1,424	-464	568	392
Midwest	Exports	Great Lakes: Emerson Exports	6	7	7	7	17	12	-6	6	0
Midwest	Exports	Great Lakes: Sault Ste. Marie US to CAN	93	72	77	72	92	78	16	70	23
Midwest	Exports	Northern Border: Port of Morgan MN to CAN Exports	0	0	0	0	0	0	0	0	0
Midwest	Exports	Panhandle Eastern Union Ojibway US to CAN	35	35	35	35	132	97	-62	92	-57
Midwest	Exports	Vector: St Clair Exports	275	123	365	323	748	977	-703	528	-253
Midwest	Exports	Viking: Emerson Exports	0	0	0	0	0	0	0	0	0
Midwest	Exports	Nexus: St Clair Exports	388	359	313	230	371	371	17	290	98
Midwest Exports			1,872	1,718	2,026	1,628	2,914	3,218	-1,346	1,554	318
Midwest	Imports	Alliance Main	1,602	1,603	1,603	1,580	1,847	1,847	-245	1,610	-8
Midwest	Imports	Great Lakes St. Clair CAN to US	109	164	143	148	93	22	87	108	1
Midwest	Imports	Great Lakes: Emerson Imports	1,542	1,483	1,543	1,537	1,557	1,558	-16	1,405	137
Midwest	Imports	Northern Border: Port of Morgan Imports	484	476	482	490	509	384	99	448	36
Midwest	Imports	Panhandle Eastern Union Ojibway CA to US	0	0	0	0	0	0	0	0	0
Midwest	Imports	Vector: St Clair Imports	0	0	0	0	0	0	0	0	0
Midwest	Imports	Viking: Emerson Imports	487	487	510	489	504	525	-38	233	254
Midwest	Imports	WBI Energy CAN to ND	0	0	0	0	0	0	0	0	0
Midwest	Imports	WBI MIPL Portal	0	0	0	0	0	0	0	0	0
Midwest Imports			4,224	4,213	4,282	4,244	4,510	4,337	-113	3,803	420
Midwest Net Imports			2,352	2,495	2,255	2,616	1,596	1,118	1,233	2,249	102
Northeast	Exports	Empire: Chippawa Exports	220	186	157	149	226	229	-8	169	51
Northeast	Exports	Iroquois: Waddington US to CAN Exports	23	50	4	4	22	33	-10	14	9
Northeast	Exports	Maritimes NE: Baileyville Exports	207	188	191	163	165	229	-22	221	-14
Northeast	Exports	National Fuel Gas TCPL- Niagara Export NY to ON	303	303	294	303	309	308	-5	281	22
Northeast	Exports	Portland: Pittsburg Exports	0	0	0	0	16	0	0	0	0
Northeast	Exports	Tennessee: Niagara River Exports	575	609	639	646	634	634	-59	622	-47
Northeast Exports			1,328	1,336	1,285	1,266	1,372	1,432	-104	1,306	21
Northeast	Imports	Canaport-Brunswick Pipeline	0	3	3	4	0	2	-2	25	-25
Northeast	Imports	Empire: Chippawa Imports	0	0	0	0	65	70	-70	0	0
Northeast	Imports	Iroquois: Waddington Imports	94	164	392	345	234	491	-397	817	-723
Northeast	Imports	Portland: Pittsburg CAN to NH Imports	327	312	421	429	390	447	-120	454	-127
Northeast	Imports	Tennessee: Niagara River Imports	0	0	0	0	0	0	0	0	0
Northeast	Imports	TransCanada ON to NY Intrastates	24	21	43	51	33	29	-5	38	-14
Northeast	Imports	TransCanada QC to VT Intrastates	39	42	51	51	40	59	-20	49	-10
Northeast Imports			484	543	911	881	761	1,099	-615	1,384	-900
Northeast Net Imports			-843	-794	-374	-385	-612	-333	-511	78	-921
Pacific NW	Exports	Northwest: FortisBC Huntingdon Exports	0	0	0	0	0	0	0	0	0
Pacific NW Exports			0	0	0	0	0	0	0	0	0
Pacific NW	Imports	Gas Transmission Northwest Kingsgate BC to ID	2,820	2,769	2,671	2,554	2,141	2,444	376	2,467	353
Pacific NW	Imports	Northwest: FortisBC Huntingdon Imports	0	0	0	0	0	0	0	0	0
Pacific NW	Imports	Northwest Williams: Sumas CAN to US NET	1,355	1,376	1,333	1,298	1,231	1,400	-45	1,106	249
Pacific NW	Imports	Westcoast Energy CAN BC to WA Intrastates	103	103	100	77	68	137	-34	126	-24
Pacific NW Imports			4,278	4,248	4,104	3,928	3,441	3,981	297	3,699	579
Pacific NW Net Imports			4,278	4,248	4,104	3,928	3,441	3,981	297	3,699	579
US Imports from Canada			8,986	9,004	9,297	9,053	8,712	9,416	-430	8,886	100
US Exports to Canada			3,200	3,054	3,311	2,894	4,286	4,650	-1,450	2,860	339
US Net Imports from Canada			5,786	5,950	5,986	6,159	4,425	4,766	1,020	6,026	-240

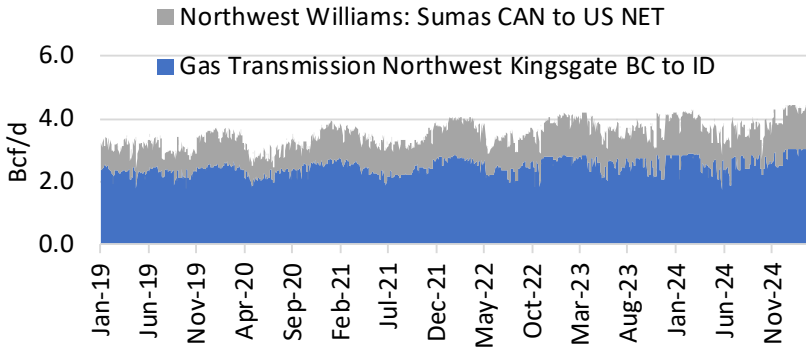
US Net Imports From Canada



YEAR	Net Imports (Bcf/d)	Jan	Feb	Mar	Apr	May	Jun	Jul	Aug	Sep	Oct	Nov	Dec
2024	Average	7.07	5.33	4.01	4.98	5.77	6.14	6.65	6.62	6.13	6.06	6.37	6.42
2024	Peak	9.01	6.17	4.82	6.03	6.41	6.92	7.36	7.73	6.74	7.00	7.23	7.87
2025	Average	7.89	6.78	5.17	5.97								
2025	Peak	10.64	10.30	6.36	6.16								
2025 VS. 2024 Average		0.82	1.45	1.16	0.99								
2025 VS. 2024 Peak		1.63	4.14	1.54	0.13								

Canadian Imports and Exports by US Regions

Pacific Northwest Imports - Major Border Points

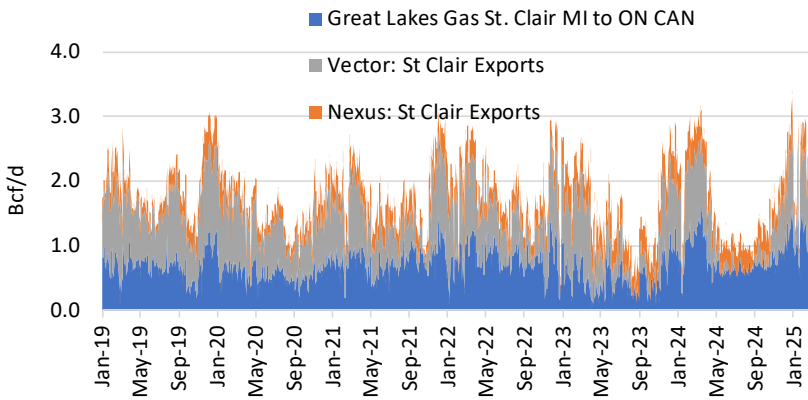


Pacific Northwest		
	4/4	4/3
Imports	4,278	4,248
Exports	0	0
Net Imp/(Exp)	4,278	4,248
Change	30	

Midwest		
	4/4	4/3
Imports	4,224	4,213
Exports	(1,872)	(1,718)
Net Imp/(Exp)	2,352	2,495
Change	-144	

Northeast		
	4/4	4/3
Imports	484	543
Exports	(1,328)	(1,336)
Net Imp/(Exp)	(843)	(794)
Change	-50	

Midwest Exports - Major Border Points



Northeast Exports - Major Border Points

