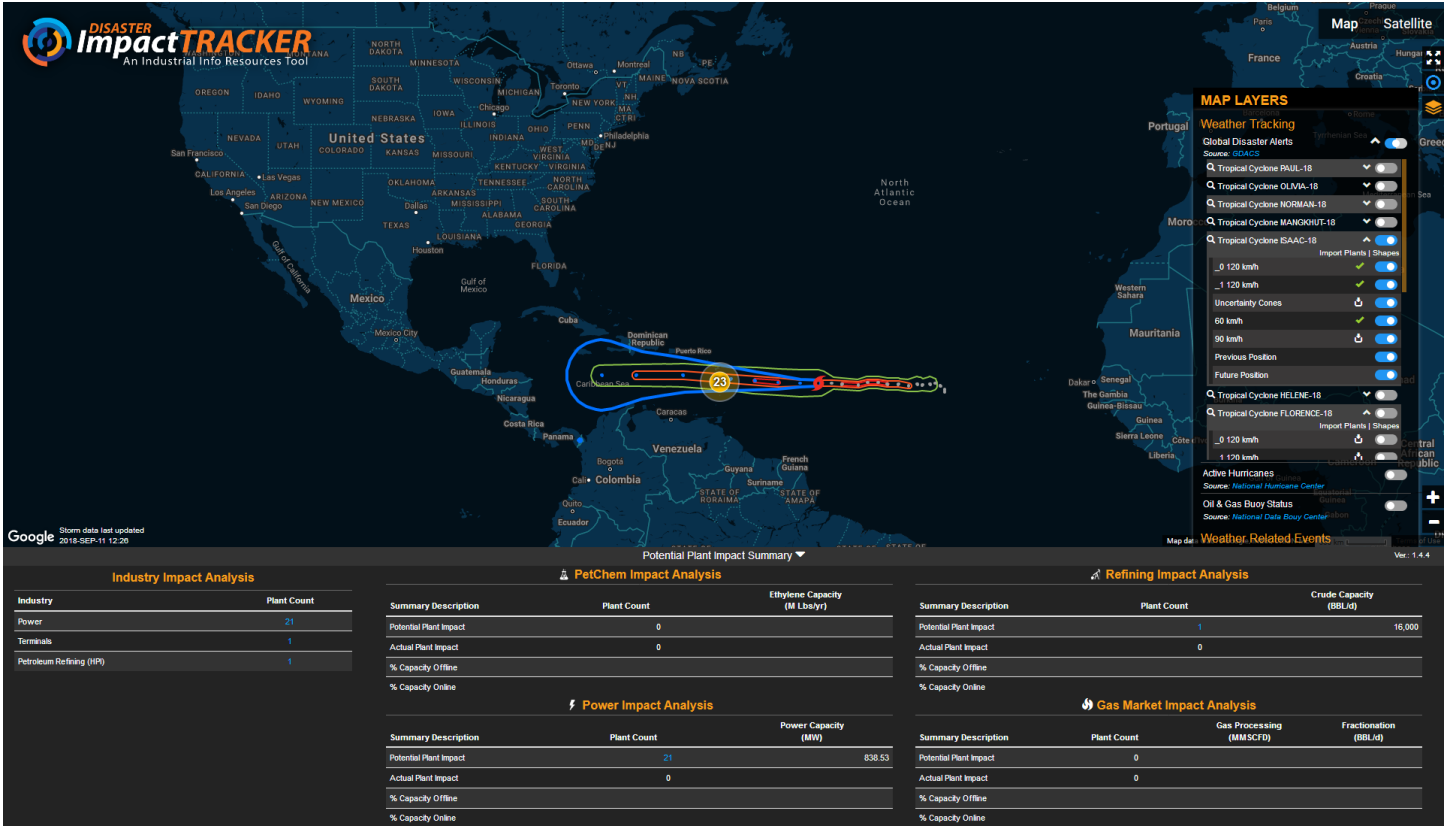


Hurricane FLORENCE

As Hurricane Florence maintains its strength as a Category 4 storm, industrial plant owners along the coasts of North Carolina, South Carolina and Virginia are preparing for extreme wind and record rainfall that could lead to flooding. Hundreds of industrial plants across all industries plan to idle production beginning Tuesday or Wednesday, and are reducing staff to essential personnel. The movement of the storm's path a little further north over the past few hours, increases the number of plants potentially impacted by the most intense hurricane-force winds to more than 875. Water levels in regional lakes are being lowered in anticipation of record rainfall, and this will continue for several days. Nuclear power plants in the potential storm path will be required to shut down if wind speeds reach or exceed 73 miles per hour. Decisions whether to shut down those plants will likely be made on Thursday, based on the storm's path at that time. Eleven power plants, producing a combined 2,673 megawatts, lie in the path of the most intense storm projection.

CLICK HERE TO VIEW A LIST OF [PLANTS CURRENTLY IN THE HURRICANE'S POTENTIAL PATH](#)
 POTENTIAL PLANT IMPACT IS CALCULATED USING [IIR'S DISASTER IMPACT TRACKER](#)



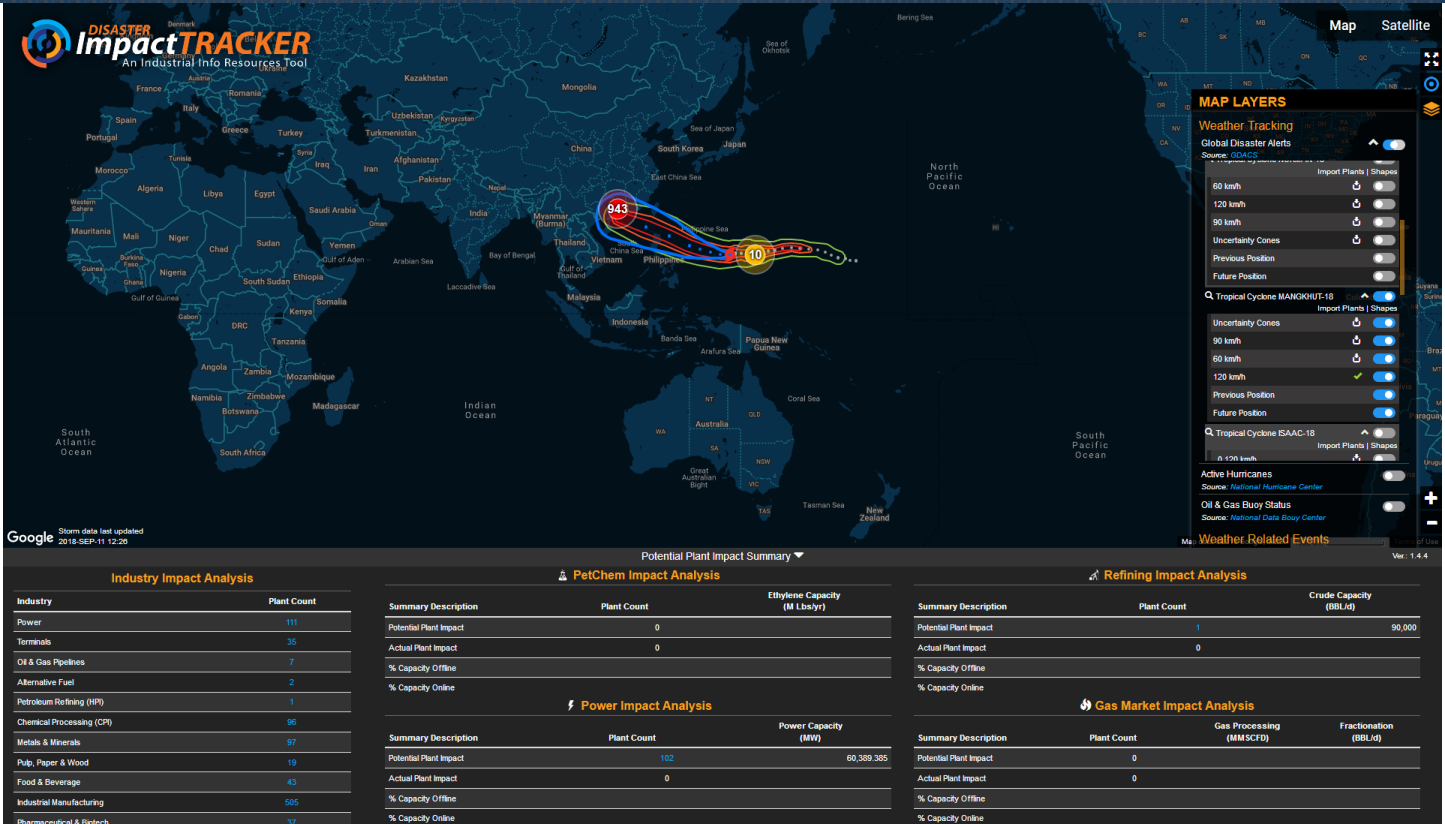


Tropical Storm ISAAC

Tropical Storm Isaac is expected to touch the Antilles between Tuesday night and Wednesday morning. Industrial Info's research teams have confirmed power plant operators in Aruba, Dominica, Antigua and Barbuda, Saint Lucia, Martinique and Guadeloupe were operating normally as of the time of this alert. The storm is expected to progress west and hit the Dominican Republic late Friday, and only heavy rains are expected at that time. Petroleum refiners in the region continue to run at normal rates despite the approaching storm. PDVSA remains on schedule to restart several units that have been down since early this summer due to electrical problems, with the restart pending for today. The Santo Domingo (Haina) Port continues routine operations.

CLICK HERE TO VIEW A LIST OF [PLANTS CURRENTLY IN THE STORM'S POTENTIAL PATH](#)
 POTENTIAL PLANT IMPACT IS CALCULATED USING [IIR'S DISASTER IMPACT TRACKER](#)





Hurricane MANGKHUT

Hurricane Mangkhut potentially threatens thousands of industrial plants across Taiwan and the most northern reaches of the Philippines. The storm passed over Guam earlier this week, leaving offline only one 66-megawatt power unit, which was idled out of caution as the storm passed. That unit is expected to resume operations on Wednesday, September 12. Current expectations are that the storm will strengthen over the next few days, dropping large amounts of rain on the eastern and southern parts of Taiwan. Depending on the storm's path, by Friday, the storm could impact operations for at least seven plants in northern Philippines, several of which are windfarm power-generating stations that are all but certain to be idled if the storm's path crosses them. Current weather predictions suggest the storm will likely diminish in size and intensity by the time it makes landfall in mainland China, reducing the risk of damage to thousands more industrial plants.

POTENTIAL PLANT IMPACT IS CALCULATED USING [IIR'S DISASTER IMPACT TRACKER](#)

